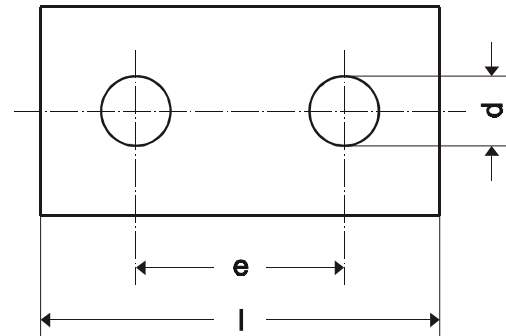


**Laschen zum Anschweißen
nach DIN 3570**



Für Rundstahlbügel

| Rundstahlbügel Größe / a ₁ | Material | e | d | l | Gewicht |
|--|----------|-----|----|-----|---------|
| 30 | 40 x 6 | 40 | 12 | 100 | 19 |
| 38 | | 48 | | 110 | 21 |
| 46 | | 56 | | 120 | 23 |
| 52 | | 62 | | 130 | 24 |
| 64 | 50 x 8 | 76 | 14 | 160 | 50 |
| 82 | | 94 | | 180 | 57 |
| 94 | | 106 | | 190 | 60 |
| 120 | 60 x 10 | 136 | 18 | 240 | 113 |
| 148 | | 164 | | 270 | 127 |
| 176 | | 192 | | 300 | 141 |
| 202 | | 218 | | 330 | 158 |
| 228 | | 248 | | 350 | 264 |
| 282 | 80 x 12 | 302 | 23 | 400 | 301 |
| 332 | | 352 | | 450 | 339 |
| 378 | | 402 | | 500 | 589 |
| 428 | 100 x 15 | 452 | 27 | 550 | 648 |
| 530 | | 554 | | 655 | 771 |

Werkstoff: St 37-2, 1.4301, 1.4571

Oberfläche: roh